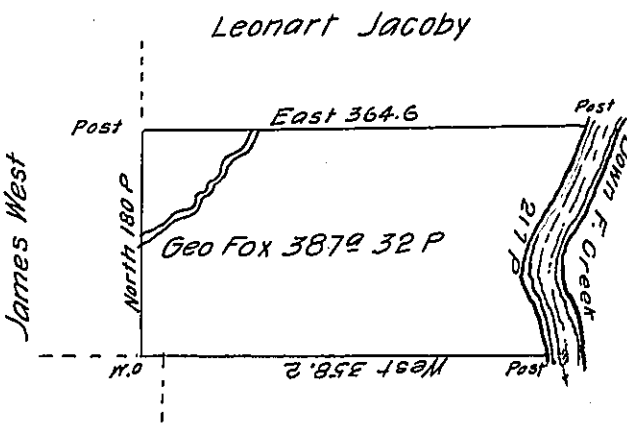


River Courses

- 5 8° E 63.2
- 5 25½° N 23
- 5 40° N 66
- 5 32° E 47
- 5 57½° E 7
- 5 36° E 10.8
- 217. P



John Fries John Chalner

Situate on the West Side of French Creek in Allegheny County Containing

387 32 P and allowance of six P. Cent for Roads &c. Surveyed the sixth day of

October 1794 In pursuance of a Warrant dated the 13th day of Ap^l 1792.

Wm Power Dy. Sr.

To Dan^l Brodhead Esq^r

Surveyor General.

IN TESTIMONY that the above is a copy of the original remaining on file in
the Department of Internal Affairs of Pennsylvania, made
conformably to an Act of Assembly approved the 16th day of
February, 1833, I have hereunto set my Hand and caused
the Seal of said Department to be affixed at Harrisburg,
this seventh day of March 1905.

Joseph P. Brown
 Secretary of Internal Affairs.